

## FIRE SAFE STAINLESS STEEL LIFT CHECK VALVES

CLASS 150

### LIQUEFIED NATURAL GAS

Bolted Bonnet

DN15 - DN300 (1/2" - 12")

Bestobell Valves have been manufacturing cryogenic valves for over forty years. We have a reputation for product innovation, product reliability and engineering excellence, so much so that there are cryogenic valves still in regular use despite being installed forty years ago.

#### Description

Class 150 Stainless Steel lift check valve with bolted bonnet and integral metal seat. Available with butt weld and flanged ends, the valve has a conical seat design for tight shut off. The bolted bonnet allows for simple site maintenance, with easy access to the serviceable parts of the valve.

- ISO 9001 accreditation
- General design in accordance with BS6364
- Flanged end connections to ANSI B16.5
- Butt Weld end connections to ANSI B16.25
- Shell minimum wall thickness in accordance with B16.34
- Optional full material traceability backed by BSEN 10204 3.1 / 3.2 Certification

#### Features and Benefits

- Designed and manufactured for use with LNG, LPG and other flammable gas service
- Temperature range -196°C to +80°C
- 316 Stainless Steel construction for marine applications
- Fire safe approved to BS EN ISO 10497:2004
- Loose bolted bonnet design allows for thermal expansion and contraction and eliminates leakage at the bonnet gasket
- Bolted bonnet allows for simple site maintenance, with easy access



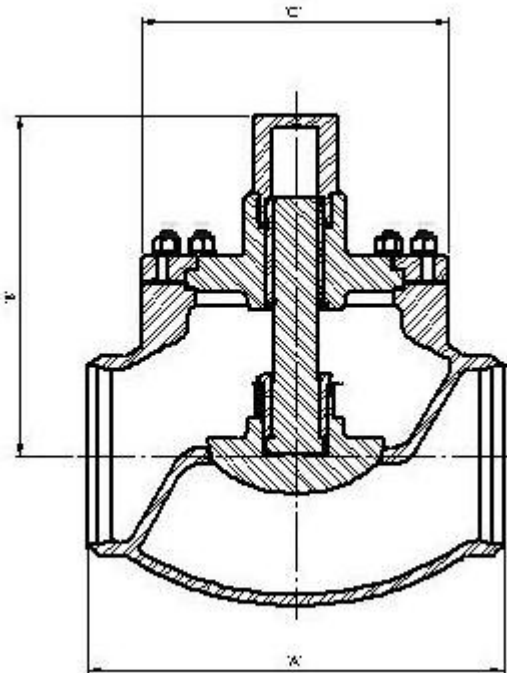
## FIRE SAFE STAINLESS STEEL LIFT CHECK VALVES

CLASS 150

### LIQUEFIED NATURAL GAS

Bolted Bonnet

DN15 - DN300 (1/2" - 12")



#### Materials

Body	SS ASTM A351 CF3M Stainless Steel
Bonnet	SS ASTM A351 CF8M Stainless Steel
Cover	SS ASTM A351 CF3M Stainless Steel
Disc	SS ASTM A351 CF8M Stainless Steel
Disc Retainer	BSEN 10088-3 1.4401 316 Stainless Steel
Bush	PTFE
Stem	BSEN 10088-3 1.4401 316 Stainless Steel
Gasket	Graphite (316SS Reinforced)
Fasteners	BS6105 A4 Gr 80 Stainless Steel

#### Construction

Bolted bonnet / loose bonnet flange  
 Extended Stem for cryogenic service  
 Flanged or Butt weld ends

#### Specifications

Valve size	'A'	'B'	'C'	WEIGHT (kg)	CV US GPM
<b>DN15 BW</b>	68	50	55	1	3.6
<b>DN25 BW</b>	140	60	79	2	13.2
<b>DN40 BW</b>	132	121	80.69 SQ	3.8	26.5
<b>DN50 BW</b>	146	147	108 SQ	4.5	43
<b>DN65 BW</b>	178	125	Ø125	7	68
<b>DN200 BW</b>	495	405	Ø365	129	700
<b>DN300 BW</b>	698	550	Ø495	300	1625

*Bestobell LNG has a continuing policy of product improvement and as such the above details are subject to change at any time and without notice. Please contact Bestobell LNG for current information.*