

## FIRE SAFE STAINLESS STEEL NEEDLE GLOBE VALVES

Inside Screw – ISRS

### LIQUEFIED NATURAL GAS

CLASS 150

Bolted Bonnet – Extended

DN15 – DN25 (1/2" – 1")

Bestobell Valves have been manufacturing cryogenic valves for over forty years. We have a reputation for product innovation, product reliability and engineering excellence.

#### Description

Stainless Steel extended stem needle globe valve with bolted bonnet and integral metal seat. Available with socket weld, butt weld and flanged ends, the valve has a conical seat design for tight shut off. The bolted bonnet allows for simple site maintenance, with easy access to the serviceable parts of the valve.

ISO 9001 accreditation

General design in accordance with BS6364

Flanged end connections to ANSI B16.5

Butt Weld end connections to ANSI B16.25

Shell minimum wall thickness in accordance with B16.34

Optional full material traceability backed by BSEN 10204 3.1 / 3.2 Certification

#### Features and Benefits

- Designed and manufactured for use with LNG, LPG and other flammable gas service
- Temperature range -196°C to +80°C
- 316 Stainless Steel construction for marine applications
- Fire safe approved to BS EN ISO 10497:2004
- Loose bolted bonnet design allows for thermal expansion and contraction and eliminates leakage at the bonnet gasket.
- Anti-blow out stem for operator safety
- Rotating disc prevents galling seat contact and reduces wear
- Quick removal of headworks allows fast/easy maintenance



Bestobell LNG, President Park, President Way, Sheffield, S4 7UR

Tel: + 44 (0) 114 224 0000

Fax: + 44 (0) 114 2784974

E-mail: [info@bestobell-lng.com](mailto:info@bestobell-lng.com)

Website: [www.bestobell-lng.com](http://www.bestobell-lng.com)

Rev No: 2

## FIRE SAFE STAINLESS STEEL NEEDLE GLOBE VALVES

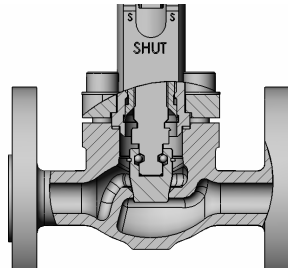
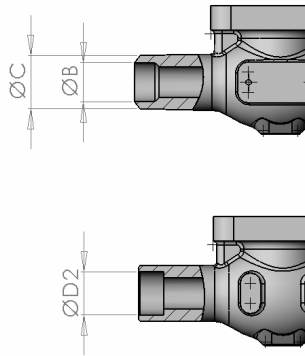
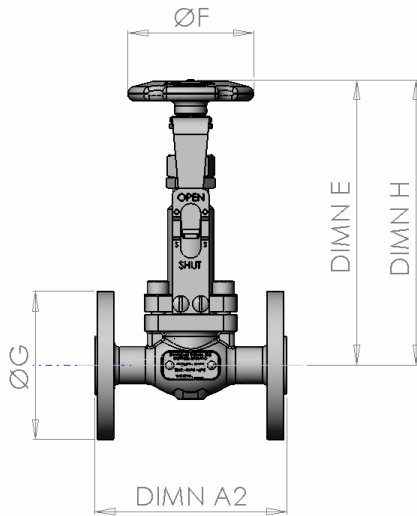
Inside Screw – ISRS

### LIQUEFIED NATURAL GAS

**CLASS 150**

Bolted Bonnet – Extended

DN15 – DN25 (1/2" – 1")



#### Materials

Body	ASTM A351 CF8M SS
Bonnet	ASTM A276 316 SS
Bonnet Flange	ASTM A351 CF8M SS
Disc	ASTM A276 316 SS
Stem	ASTM A276 316 SS
Gland Packing	Graphite
Gasket	Graphite/316 Stainless Steel
Fasteners	BS6105 A4 Gr.80 Stainless Steel

#### Construction

Bolted bonnet / loose bonnet flange  
 Extended stem for cryogenic service  
 Flanged, butt welded or socket welded connections  
 Metal to metal seats

#### Specifications

Valve Size		Face-Face - A2 <small>Standard sizes shown - enquire for other sizes</small>			Butt Weld Imperial Pipe		Socket Weld Imperial Pipe	Flange CL150	Flange CL300	Dimension over Handwheel (+Extension Length)		Extension Length	H'Wheel Ø F	Cv US.GPM	Kv m3/hr
		SW	BW	RF	B	C	D2	ØG	ØG	E Open	E Closed				
DN15	1/2"	114 (4.49)	114 (4.49)	114 (4.49)	16.9 (0.67)	21.3 (0.84)	22.2/21.8 (0.71/0.69)	88.9 (3.50)	95.2 (3.75)	220	229	100, 230	80 (3.15)	3.6	3.1
DN25	1"	140 (5.51)	140 (5.51)	140 (5.51)	27.9 (1.53)	33.4 (1.66)	43.1/42.7 (1.35/1.33)	107.9 (4.25)	123.8 (4.63)	248	233	150, 230	101 (3.98)	13.2	11.4

*Bestobell LNG has a continuing policy of product improvement and as such the above details are subject to change at any time and without notice. Please contact Bestobell LNG for current information.*