

**STAINLESS STEEL SWING CHECK VALVES
FIRE SAFE DESIGN
LIQUEFIED NATURAL GAS
CLASS 150
Bolted Bonnet
DN100 – DN400 (4" – 16")**

Bestobell Valves have been manufacturing cryogenic valves for over forty years. We have a reputation for product innovation, product reliability and engineering excellence.

Description

Stainless Steel Swing Check Valve with bolted bonnet. Available with flanged end connections, the valve has PTFE seal for tight shut off. The bolted bonnet allows for simple site maintenance, with easy access to the serviceable parts of the valve.

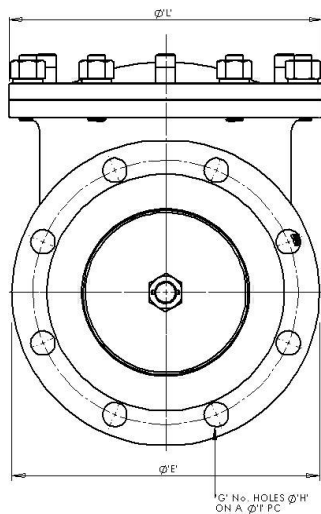
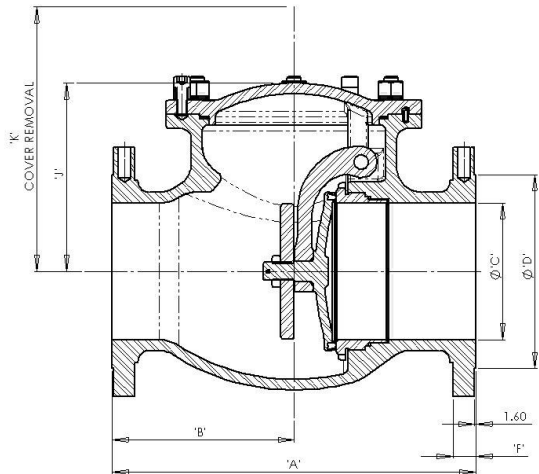
ISO 9001 accreditation
General design in accordance with BS6364
Flanged end connections to ANSI B16.5
Shell minimum wall thickness in accordance with B16.34
Optional full material traceability backed by BSEN 10204 3.1 / 3.2 Certification

Features and Benefits

- Designed and manufactured for use with LNG, LPG and other flammable gas service
- Temperature Range -196°C to + 80°C
- 316 Stainless Steel construction for marine applications
- PTFE seal ensures tight shut off.
- Internal hinge design
- Bolted bonnet allows for simple site maintenance, with easy access



STAINLESS STEEL SWING CHECK VALVES
FIRE SAFE DESIGN
LIQUEFIED NATURAL GAS
CLASS 150
 Bolted Bonnet
 DN100 – DN400 (4" – 16")



Materials

Body	SS ASTM A351 CF8M
Bonnet	SS ASTM A351 CF8M
Hinge Pin	BS EN 10088-3 1.4401 (316 ST.ST)
Hinge	SS ASTM A351 CF8M
Disc	SS ASTM A351 CF8M
Sealing Ring	PTFE
Seat	SS ASTM A351 CF8M
Seat Seal	Graphite
Bonnet Gasket	SS Reinforced Graphite
Fasteners	SS Gr. A4-80 BS6105 Type 316

Construction

Bolted bonnet
 Internal hinge design
 Disc with integrated PTFE seal
 Graphite gaskets
 Flanged end connections

Specifications

Valve Size	'A'	'B'	Ø 'C'	Ø 'D'	Ø 'E'	'F'	'G'	Ø 'H'	Ø 'I'	'J'	'K'	Ø 'L'	Weight (Kg)
DN100	292	146	101.6	157	228.6	24	8	19.05	190.5	142	170	204	35
DN150	406	203	152.4	216	279.4	25.4	8	22.2	241.3	217	280	285	64
DN350	787	393.5	355.6	413	533.4	35	12	28.6	476.25	389	460	575	343
DN400	Please contact Bestobell LNG for a product specification												

Bestobell LNG has a continuing policy of product improvement and as such the above details are subject to change at any time and without notice. Please contact Bestobell LNG for current information.