

## FIRE SAFE STAINLESS STEEL SWING CHECK VALVES CLASS 150 LIQUEFIED NATURAL GAS

Bolted Bonnet  
DN25 – DN50 (1" – 2")

Bestobell Valves have been manufacturing cryogenic valves for over forty years. We have a reputation for product innovation, product reliability and engineering excellence.

### Description

Stainless Steel Swing Check Valve with bolted bonnet. Available with flanged end connections, the valve has PTFE seal for tight shut off. The bolted bonnet allows for simple site maintenance, with easy access to the serviceable parts of the valve.

ISO 9001 accreditation

General design in accordance with BS6364

Flanged end connections to ANSI B16.5

Shell minimum wall thickness in accordance with B16.34

Optional full material traceability backed by BSEN 10204 3.1 / 3.2 Certification

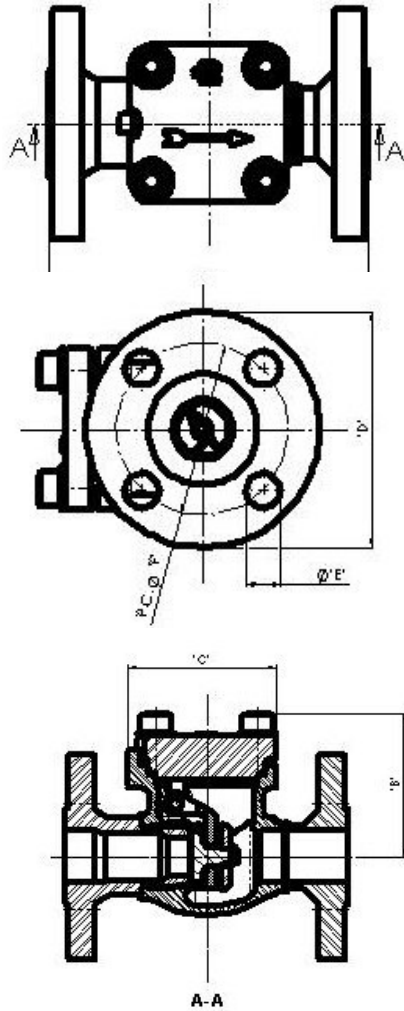
### Features and Benefits

- Designed and manufactured for use with LNG, LPG and other flammable gas service
- Temperature Range -196°C to + 80°C
- 316 Stainless Steel construction for marine applications
- Internal hinge design
- PTFE seal ensures tight shut off
- Quick removal of headworks allows fast/easy maintenance



**FIRE SAFE STAINLESS STEEL SWING CHECK VALVES**  
**CLASS 150**  
**LIQUEFIED NATURAL GAS**

Bolted Bonnet  
 DN25 – DN50 (1" – 2")



**Materials**

Body	SS ASTM A351 CF8M
Bonnet	SS ASTM A351 CF8M
Hinge Pin	BS EN 10088-3 1.4401 (316 ST.ST)
Hinge	SS ASTM A351 CF8M Stainless Steel
Disc	SS ASTM A351 CF8M
Sealing Ring	PTFE
Seat	SS ASTM A351 CF8M
Seat Seal	Graphite
Bonnet	SS Reinforced Graphite
Gasket	SS Reinforced Graphite
Fasteners	SS Gr. A4-80 BS6105 Type 316

**Construction**

Bolted bonnet  
 Internal hinge design  
 Disc with integrated PTFE seal  
 Graphite gaskets  
 Flanged end connections

**Specifications**

Valve size mm	'A'	'B'	'C'	'D'	Ø 'E'	P.C. Ø 'F'	WEIGHT (Kg's)	CV US GPM
DN25	127	75.5	79 SQ	107.95	15.75	79.25	4	13.20
DN50	203	105	Ø125	152.4	19	120.6	9.9	63

*Bestobell LNG has a continuing policy of product improvement and as such the above details are subject to change at any time and without notice. Please contact Bestobell LNG for current information.*